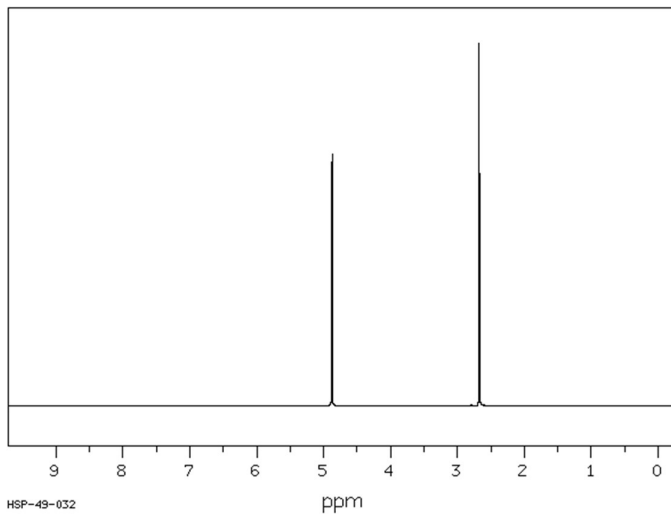


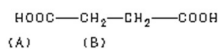
SDBS-¹H NMR SDBS No. 3001HSP-49-032

C₄H₆O₄

succinic acid



HSP-49-032



Assign. Shift(ppm)

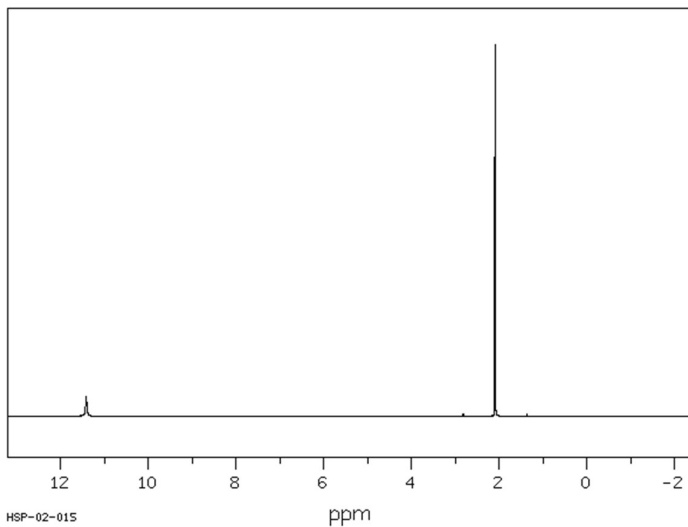
A 4.87
B 2.671

SIGNAL A INCLUDES H2O

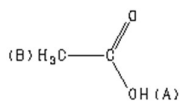
SDBS-¹H NMR SDBS No. 306HSP-02-015

C₂H₄O₂

acetic acid



HSP-02-015



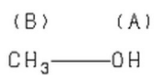
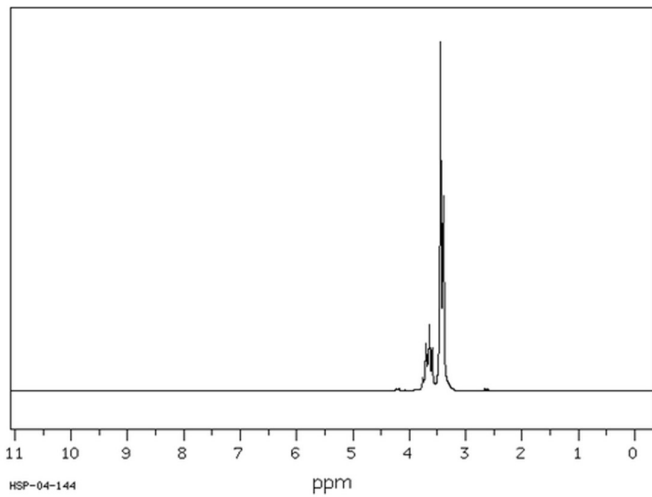
Assign. Shift(ppm)

A 11.42
B 2.098

SDBS-¹H NMRSDBS No. 3302HSP-04-144

C H₄ O

methanol



Assign. Shift(ppm)

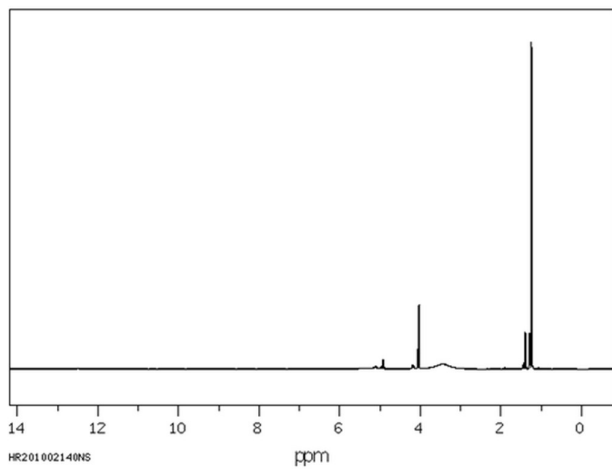
A 3.66
B 3.43

J(A,B)=4.6HZ.

SDBS-¹H NMR

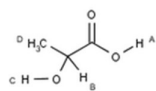
C₃H₆O₃

lactic acid



Assign. Shift(ppm)

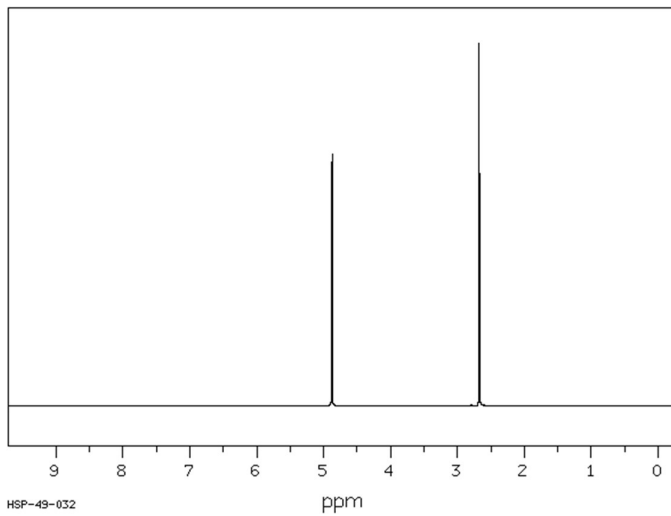
A 12.4
B 4.045
C 3.4
D 1.236



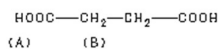
SDBS-¹H NMR SDBS No. 3001HSP-49-032

C₄H₆O₄

succinic acid



HSP-49-032



Assign. Shift(ppm)

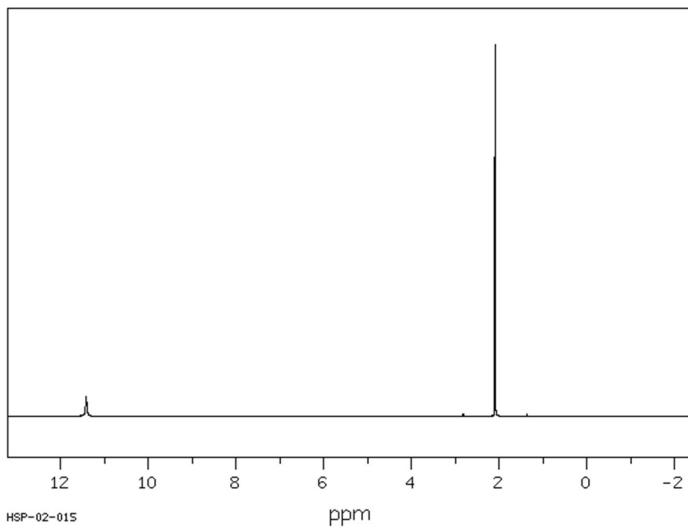
A 4.87
B 2.671

SIGNAL A INCLUDES H2O

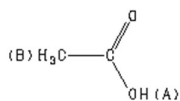
SDBS-¹H NMR SDBS No. 306HSP-02-015

C₂H₄O₂

acetic acid



HSP-02-015



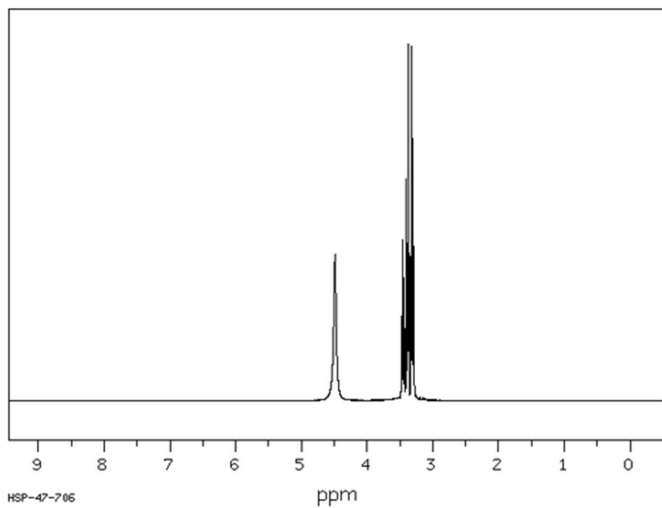
Assign. Shift(ppm)

A 11.42
B 2.098

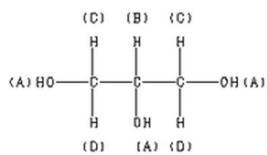
SDBS-¹H NMRSDBS No. 2517HSP-47-706

C₃H₈O₃

glycerol



HSP-47-706

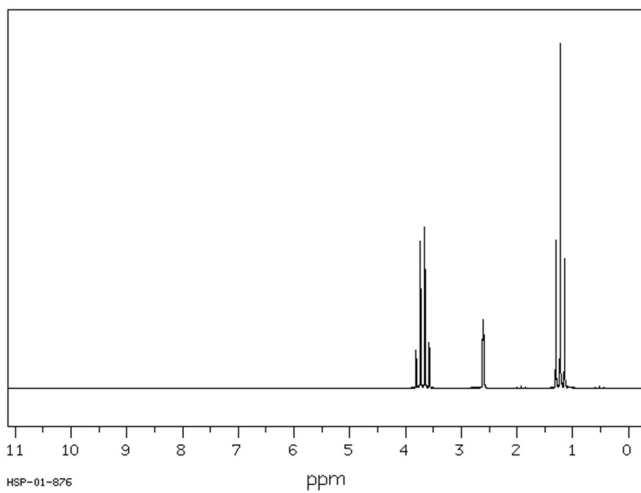


Assign.	Shift(ppm)
A	4.48
B	3.448
C *1	3.382
D *1	3.310

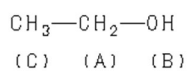
SDBS-¹H NMRSDBS No. 1300HSP-01-876

C₂H₆O

ethyl alcohol



HSP-01-876

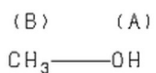
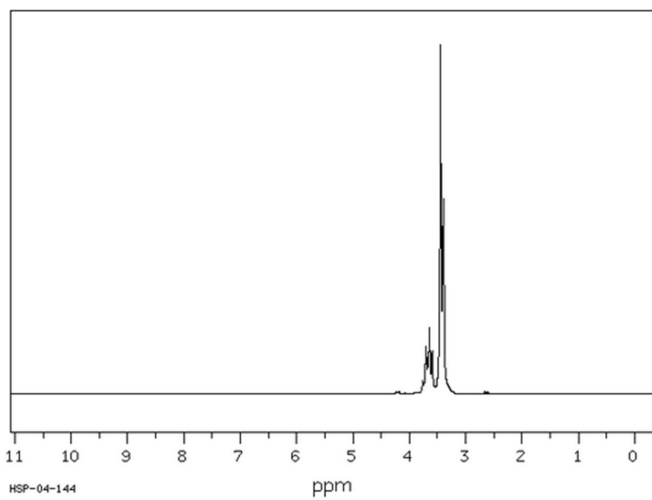


Assign.	Shift(ppm)
A	3.687
B	2.61
C	1.226

SDBS-¹H NMRSDBS No. 3302HSP-04-144

C H₄ O

methanol



Assign. Shift(ppm)

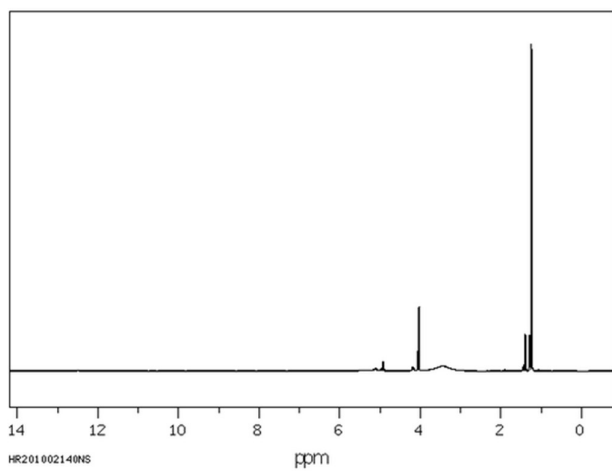
A 3.66
B 3.43

J(A,B)=4.6HZ.

SDBS-¹H NMR

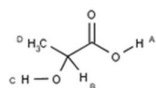
C₃H₆O₃

lactic acid



Assign. Shift(ppm)

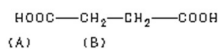
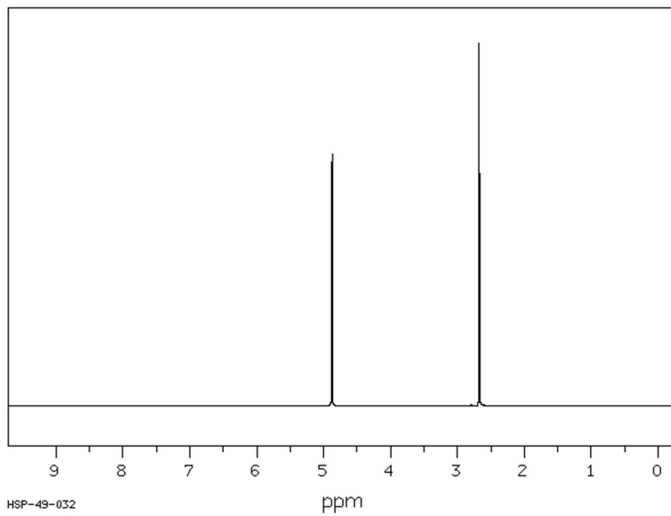
A 12.4
B 4.045
C 3.4
D 1.236



SDBS-¹H NMR SDBS No. 3001HSP-49-032

C₄H₆O₄

succinic acid



Assign. Shift(ppm)

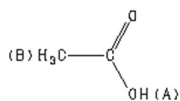
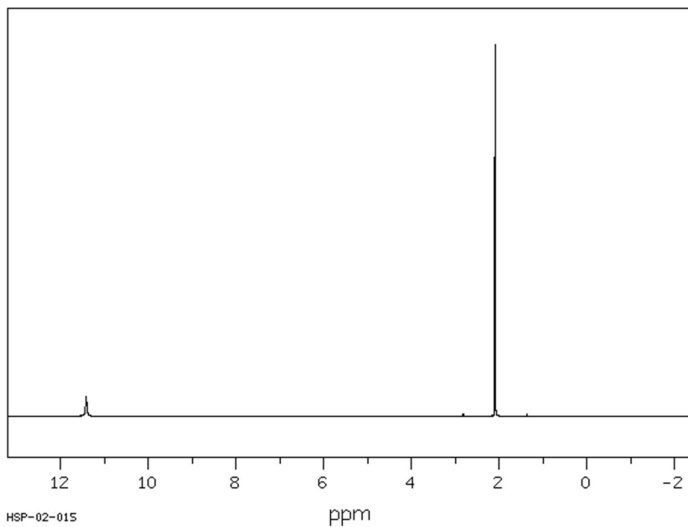
A 4.87
B 2.671

SIGNAL A INCLUDES H₂O

SDBS-¹H NMR SDBS No. 306HSP-02-015

C₂H₄O₂

acetic acid



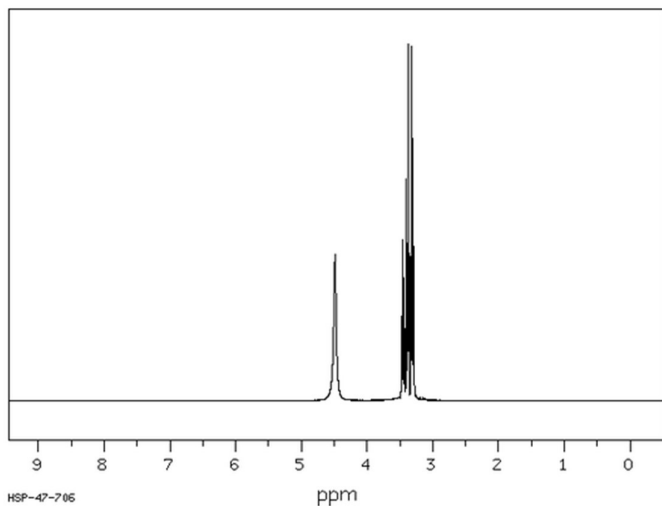
Assign. Shift(ppm)

A 11.42
B 2.098

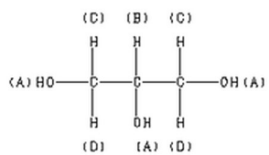
SDBS-¹H NMRSDBS No. 2517HSP-47-706

C₃H₈O₃

glycerol



HSP-47-706

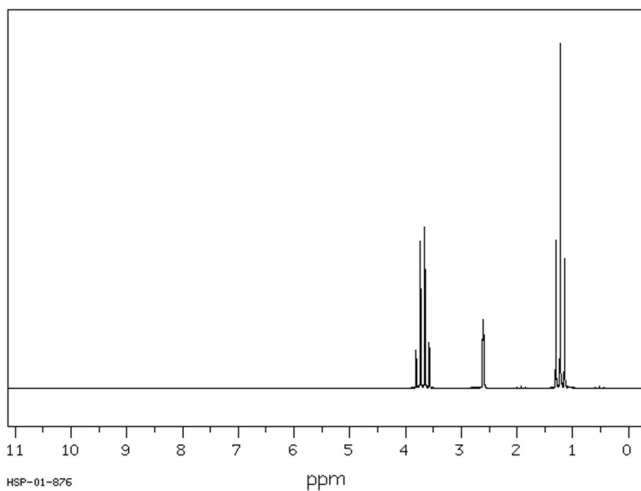


Assign.	Shift(ppm)
A	4.48
B	3.448
C *1	3.382
D *1	3.310

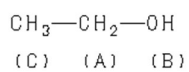
SDBS-¹H NMRSDBS No. 1300HSP-01-876

C₂H₆O

ethyl alcohol



HSP-01-876

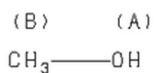
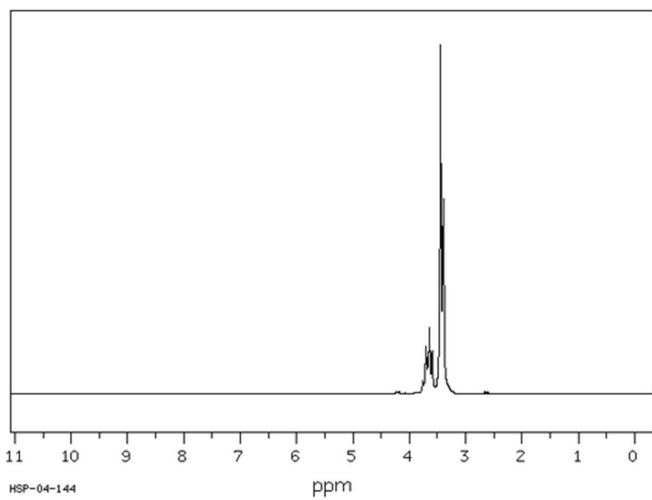


Assign.	Shift(ppm)
A	3.687
B	2.61
C	1.226

SDBS-¹H NMRSDBS No. 3302HSP-04-144

C H₄ O

methanol



Assign. Shift(ppm)

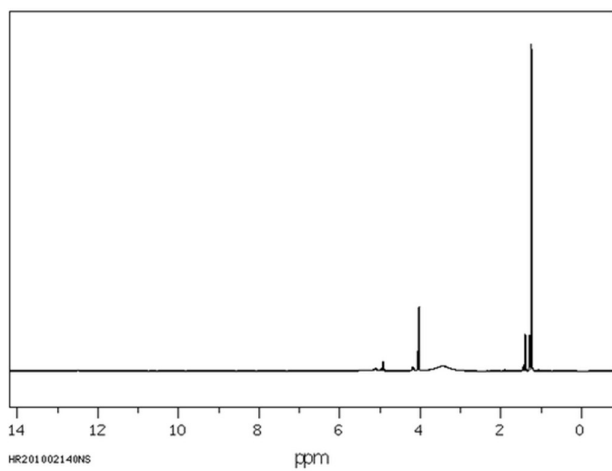
A 3.66
B 3.43

J(A,B)=4.6HZ.

SDBS-¹H NMR

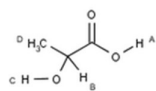
C₃H₆O₃

lactic acid



Assign. Shift(ppm)

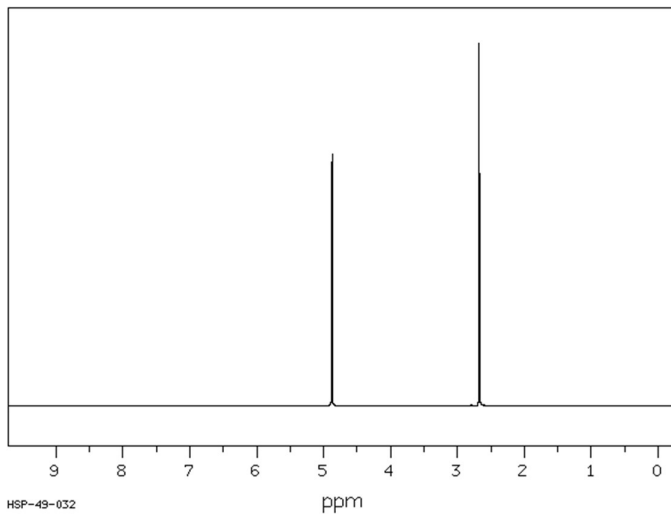
A 12.4
B 4.045
C 3.4
D 1.236



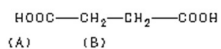
SDBS-¹H NMR SDBS No. 3001HSP-49-032

C₄H₆O₄

succinic acid



HSP-49-032



Assign. Shift(ppm)

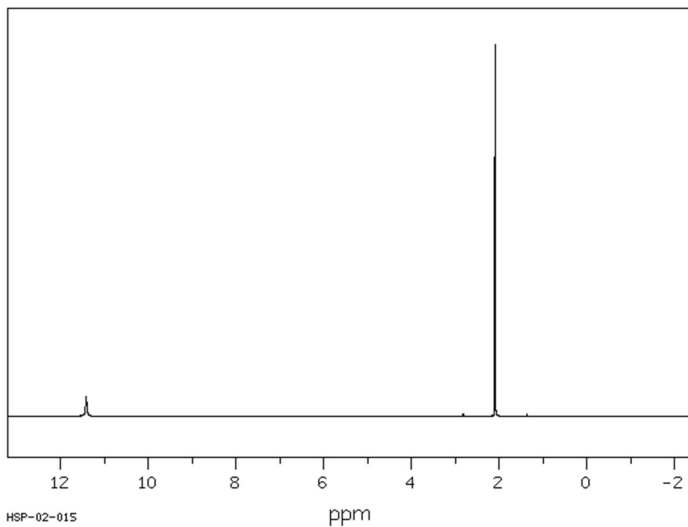
A 4.87
B 2.671

SIGNAL A INCLUDES H2O

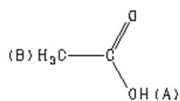
SDBS-¹H NMR SDBS No. 306HSP-02-015

C₂H₄O₂

acetic acid



HSP-02-015



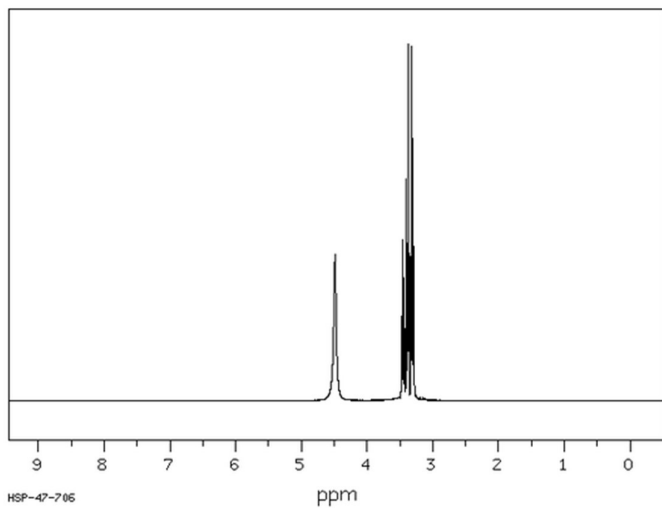
Assign. Shift(ppm)

A 11.42
B 2.098

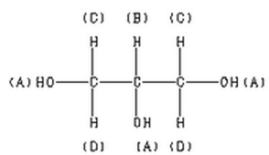
SDBS-¹H NMRSDBS No. 2517HSP-47-706

C₃H₈O₃

glycerol



HSP-47-706

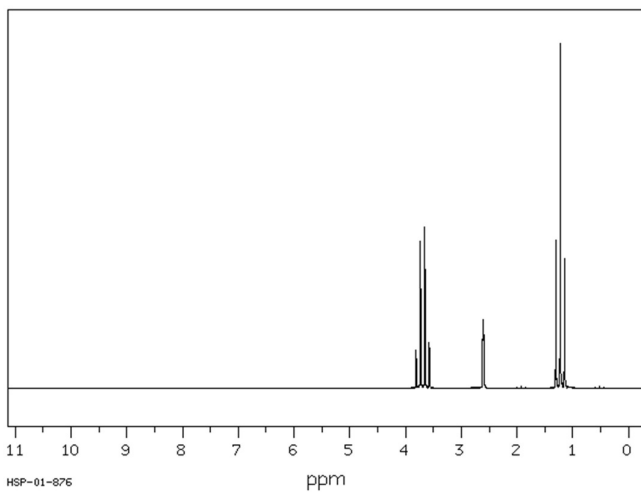


Assign.	Shift(ppm)
A	4.48
B	3.448
C *1	3.382
D *1	3.310

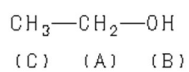
SDBS-¹H NMRSDBS No. 1300HSP-01-876

C₂H₆O

ethyl alcohol



HSP-01-876

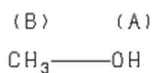
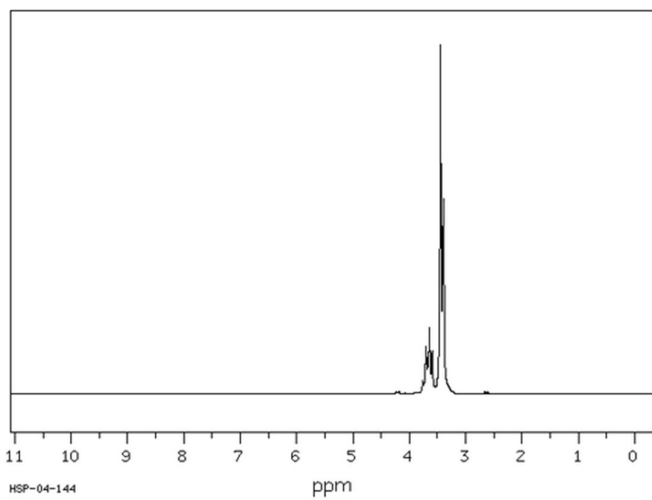


Assign.	Shift(ppm)
A	3.687
B	2.61
C	1.226

SDBS-¹H NMRSDBS No. 3302HSP-04-144

C H₄ O

methanol



Assign. Shift(ppm)

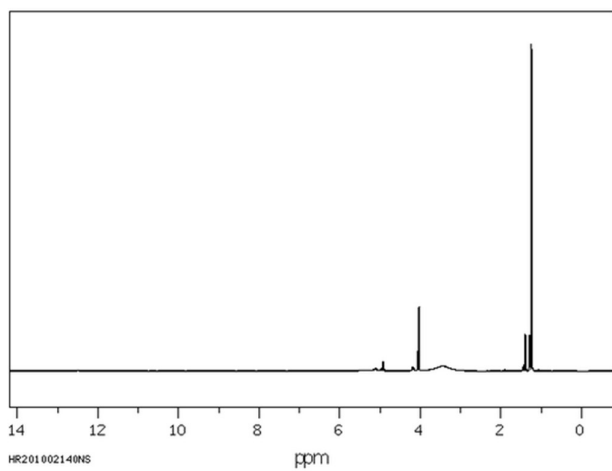
A 3.66
B 3.43

J(A,B)=4.6HZ.

SDBS-¹H NMR

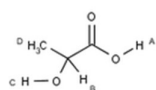
C₃H₆O₃

lactic acid



Assign. Shift(ppm)

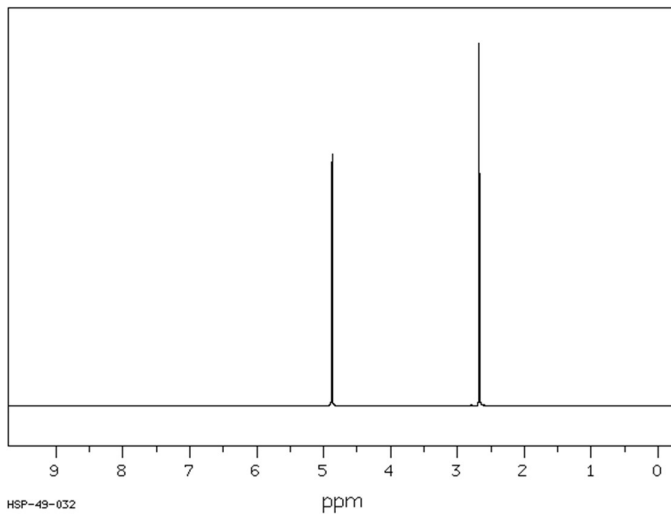
A 12.4
B 4.045
C 3.4
D 1.236



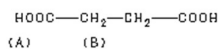
SDBS-¹H NMR SDBS No. 3001HSP-49-032

C₄H₆O₄

succinic acid



HSP-49-032



Assign. Shift(ppm)

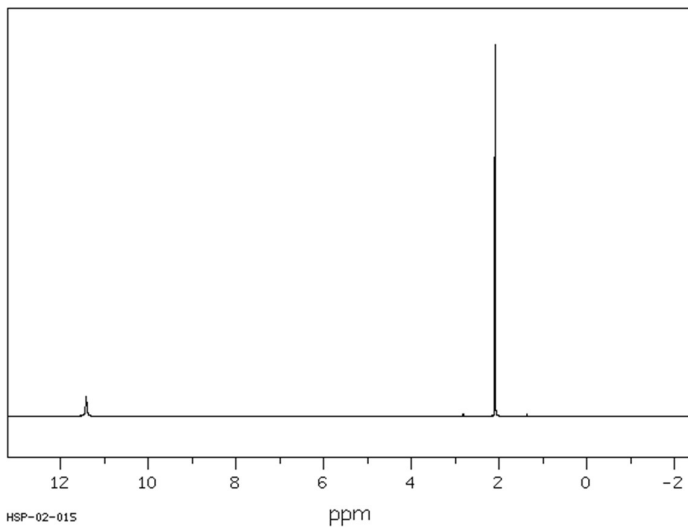
A 4.87
B 2.671

SIGNAL A INCLUDES H2O

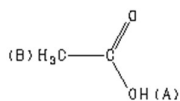
SDBS-¹H NMR SDBS No. 306HSP-02-015

C₂H₄O₂

acetic acid



HSP-02-015



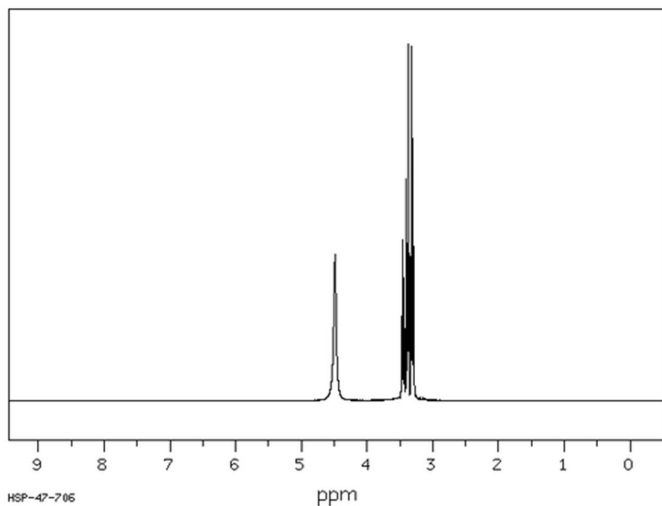
Assign. Shift(ppm)

A 11.42
B 2.098

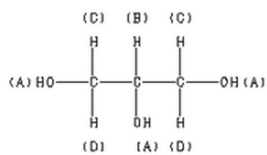
SDBS-¹H NMRSDBS No. 2517HSP-47-706

C₃H₈O₃

glycerol



HSP-47-706

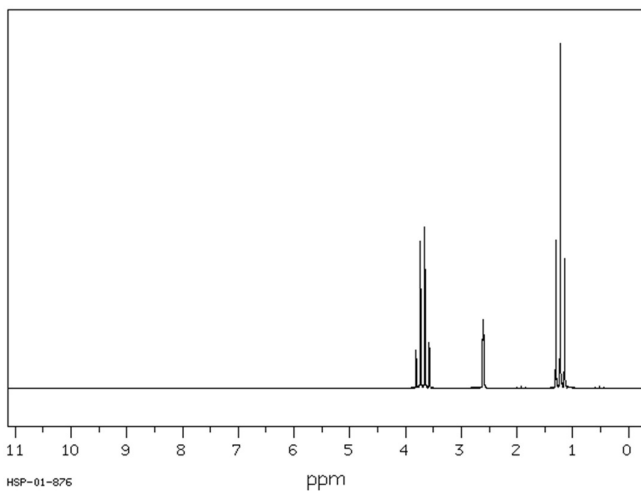


Assign.	Shift(ppm)
A	4.48
B	3.448
C	*1 3.382
D	*1 3.310

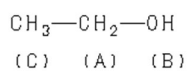
SDBS-¹H NMRSDBS No. 1300HSP-01-876

C₂H₆O

ethyl alcohol



HSP-01-876

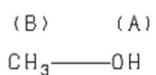
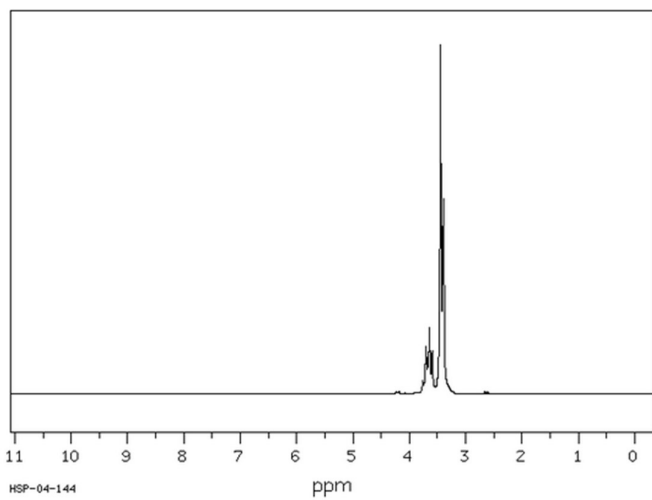


Assign.	Shift(ppm)
A	3.687
B	2.61
C	1.226

SDBS-¹H NMRSDBS No. 3302HSP-04-144

C H₄ O

methanol



Assign. Shift(ppm)

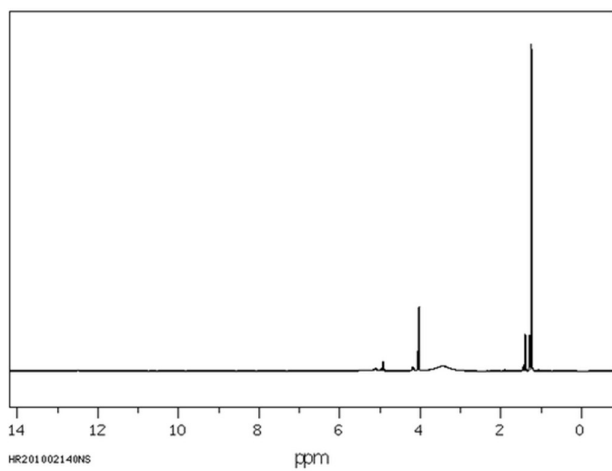
A 3.66
B 3.43

J(A,B)=4.6HZ.

SDBS-¹H NMR

C₃H₆O₃

lactic acid



Assign. Shift(ppm)

A 12.4
B 4.045
C 3.4
D 1.236

